



Woven Image®

FOR MORE INFORMATION CONTACT

info@wovenimage.com

1800 888 650

EchoPanel® Code EchoPanel® Tile



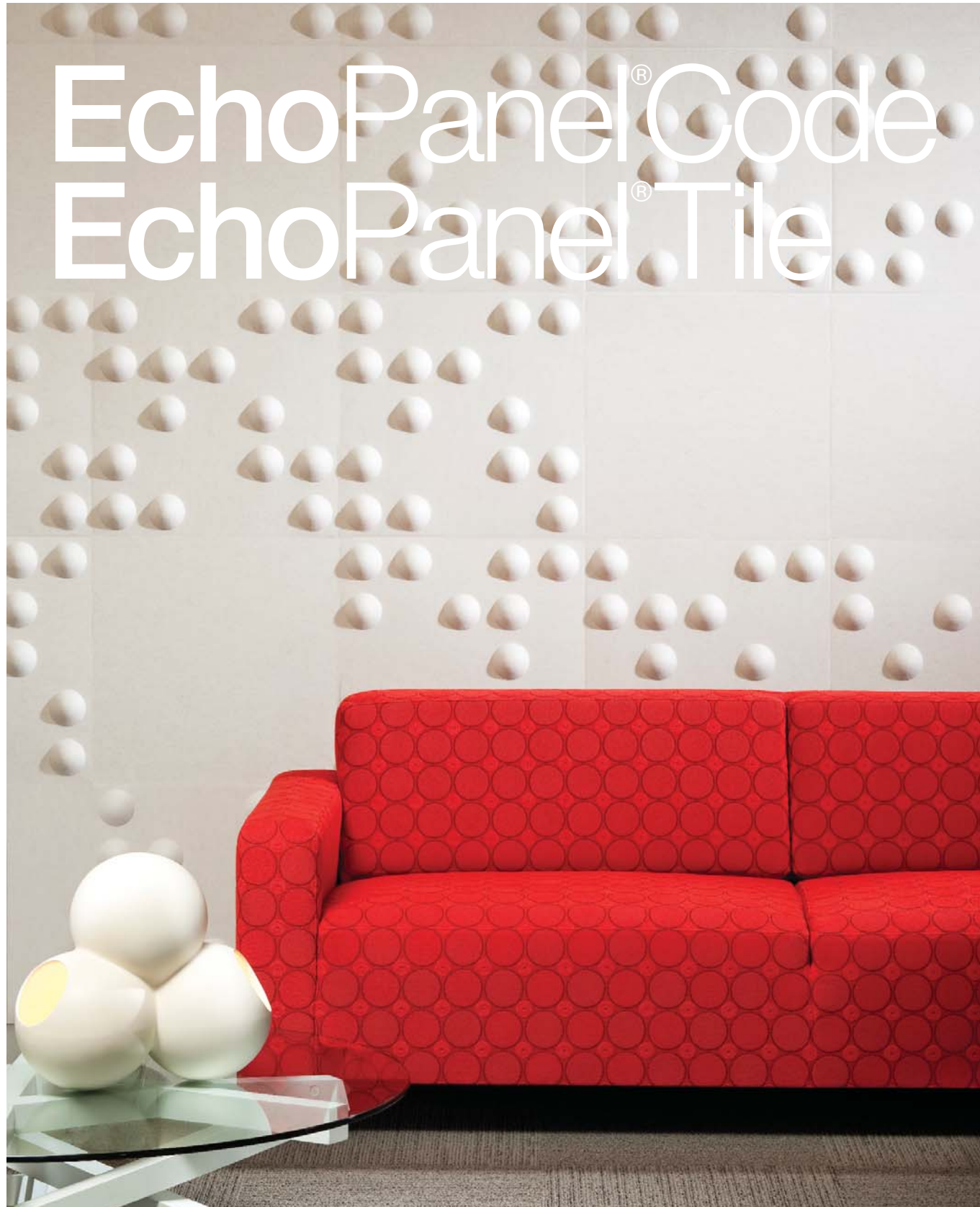
SPECIFICATIONS

Product Name	EchoPanel®Code & EchoPanel®Tile
Origin	Made in Australia
Colours	7
Composition	100% PET (60% recycled)
Tile Dimensions	500mm x 500mm +/- 1%
Weight	1400g/m² +/- 10%
Thickness	EchoPanel®Code: 25mm (including raised area) +/- 7% EchoPanel®Tile: 7mm +/- 7%

PERFORMANCE

Colour Fastness to Light	ISO 105-B02-1994 Rating: 6-7 AS 2001.4.21-1970 Rating: 6-7
Fire Test	AS 3837 Clasification: Group 3
Care	Blot excess spills from material quickly. Wipe with a damp cloth. If stain persists, apply small quantities of carpet or upholstery shampoo solution with a damp cloth. Blot well with a clean cloth after each application of the solution. Warning, avoid excessive amounts of water. Ensure adequate ventilation if the product is likely to be subject to excessive moisture.
Sound Absorption	AS ISO 354 – 2006 NRC Value: 0.25 (with no air gap) NRC Value: 0.45 (with 20mm air gap) NRC Value: 0.70 (with 50mm air gap)
VOC Emissions	ASTM D5116 Rate: < 0.02 mg/m²/hr (7 days)

Environmental



wovenimage.com



EchoPanel® Code EchoPanel® Tile



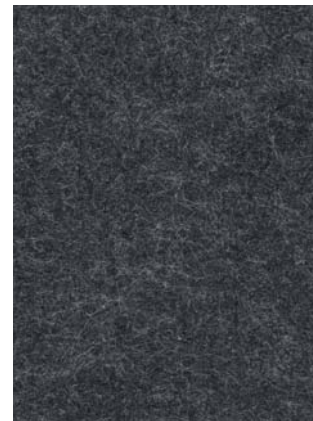
294



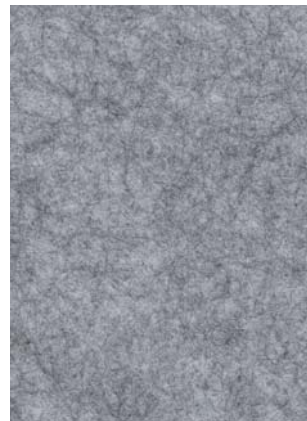
612



560



542



442



909



500

WHAT IS ECHOPANEL®TILE

EchoPanel®Tile is a sustainable contemporary designed acoustic wall solution from Woven Image.

Current Range:

EchoPanel®Code
500mm x 500mm embossed tile
10 per box, coverage 2.5m²

EchoPanel®Tile
500mm x 500mm flat tile
10 per box, coverage 2.5m²

WHAT IS ECHOPANEL®?

EchoPanel® is produced from recyclable and recycled PET, using approximately 60% post consumer waste.

It is Australian made and designed with full third party environmental accreditation. It has been awarded the Australian Design Award.

ECHOPANEL®TILE KEY APPLICATIONS

EchoPanel®Tile is designed for vertical surface applications across commercial office, primary, secondary and tertiary, education, retail, hospitality and government. For a decorative and acoustic sustainable interior use EchoPanel®Tile for:

- Floor to ceiling wall covering
- Pin board surface
- Printable panel for corporate branding and design

ECHOPANEL®TILE KEY BENEFITS

A Lighter Product

At 1400 grams per square metre, EchoPanel®Tile is approximately 20% of the weight of MDF Board or Plaster Board in equivalent thickness. Its extreme light weight allows a diverse range of applications.



EchoPanel®Code

Improved Acoustics

EchoPanel®Tile meets the acoustic demands of today's open designed spaces by absorbing sound. It has been tested by RMIT to AS ISO 354-2006. It received noise reduction coefficient (NRC) results of:

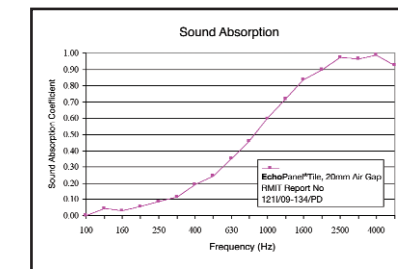
NRC Value: 0.25 (with no air gap)

NRC Value: 0.45 (with 20mm air gap)

NRC Value: 0.70 (with 50mm air gap)

These values represent a better than average absorption of sound particularly useful in open and reverberating spaces. The NRC is a number index for rating how absorptive a material is. In EchoPanel®Tile with a 20mm air gap, it means that 45% of sound that comes into contact with it is absorbed and 55% of the sound is reflected back into the space, unlike many hard plastics or metals that would have little absorption.

Graph: Sound Absorption Coefficients of Woven Image EchoPanel®Tile tested with a 20mm air gap



Reduced costs in labour and materials

Wall panel installations utilising EchoPanel®Tile are uncomplicated and utilise fewer materials compared to traditional wall or screen systems. Instead of upholstering a metal tile or a piece of MDF board, EchoPanel®Tile is the finished surface removing the cost of covering materials. The resulting system not only uses less material in its production but is also less labour intensive with reduced materials handling.



EchoPanel®Tile

Environmentally Sustainable

- EchoPanel®Tile is produced from recycled and recyclable PET (approximately 60% post consumer waste sourced such as recycled PET bottles)
- The base fibre is certified to Oeko-tex Standard 100 for meeting human ecological requirements. Certified by TESTex Zurich, Swiss Textile Institute
- EchoPanel®Tile is certified to carry the Good Environmental Choice Australia label
- EchoPanel®Tile can secure maximum credits under the Eco Preferred Content category in Green Star rating tools as administered by the Green Building Council of Australia
- EchoPanel®Tile is a low VOC product. See specifications for detailed results
- As EchoPanel®Tile is the finished surface in itself, dematerialisation becomes easy; through the elimination of the older 'combined fabric and wood' wall panel, screens, and partitions systems
- The Woven Image Product Stewardship Program will guarantee to coordinate the recovery, reuse or recycling of uncontaminated EchoPanel®Tile from disassembled wall panels and other commercial applications. Woven Image will also coordinate the collection and recycling of factory off cuts

Multi Coloured Design Potential

EchoPanel®Tile and EchoPanel®Code can be combined in multiple complementary colours or design configuration to achieve unique and colourful contemporary interiors. Custom printing and colours are available on request, making it an ideal application for corporate branding and design opportunities.

EchoPanel®Tile can be fixed by nail, screw or glue.

For full EchoPanel®Tile application guide please visit: wovenimage.com